

DNA Ladders and Markers

Accurate and Clear Band Identification



Clear
band
resolution

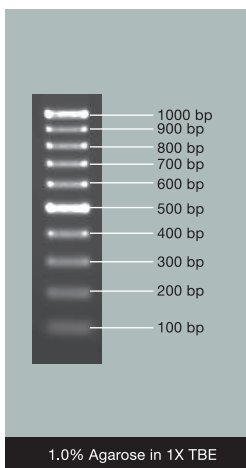
Accurate,
easy-to-read
results

Ready-to-use
& load-and-go

VC DNA Ladders

Serves as molecular weight standards for electrophoresis for both agarose and polyacrylamide gels. Suitable for sizing of PCR products or other double-stranded DNA fragments.

VC 100bp DNA Ladder

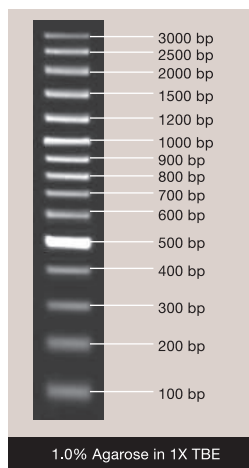


Packaging size:

- NL1401 : 50 µg
- NL1402 : 5 X 50 µg
- NL1403 : 50 µg (ready-to-use)
- NL1404 : 5 X 50 µg (ready-to-use)

Store at -20°C

VC 100bp Plus DNA Ladder

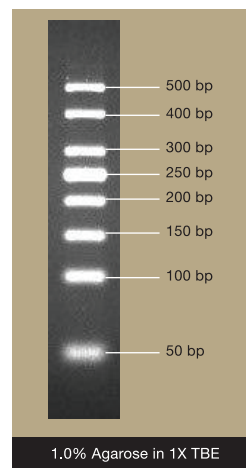


Packaging size:

- NL1405 : 50 µg
- NL1406 : 5 X 50 µg
- NL1407 : 50 µg (ready-to-use)
- NL1408 : 5 X 50 µg (ready-to-use)

Store at -20°C

VC 50kb DNA Ladder

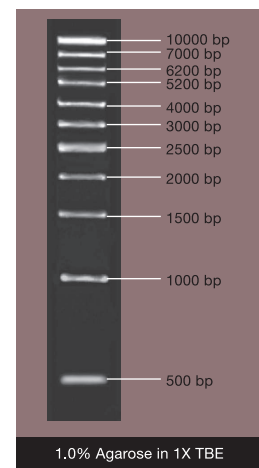


Packaging size:

- NL1421 : 50 µg
- NL1422 : 5 X 50 µg
- NL1423 : 50 µg (ready-to-use)
- NL1424 : 5 X 50 µg (ready-to-use)

Store at -20°C

VC 1kb DNA Ladder



Packaging size:

- NL1409 : 50 µg
- NL1410 : 5 X 50 µg
- NL1411 : 50 µg (ready-to-use)
- NL1412 : 5 X 50 µg (ready-to-use)

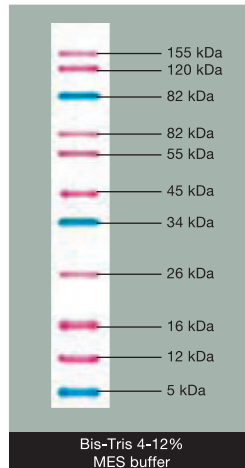
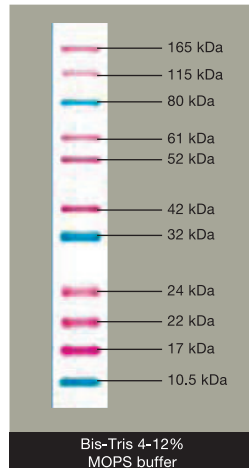
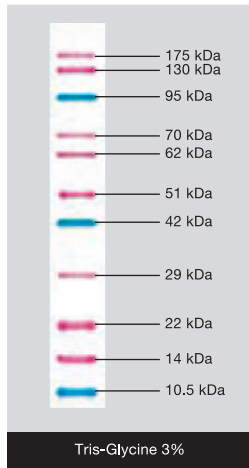
Store at -20°C

Also available:

VC 1kb-Ex DNA Ladder - NL1413 : 50 µg, NL1414 : 50 x 50 µg, NL1415 : 50 µg (ready-to-use), NL1416 : 50 x 50 µg (ready-to-use)
VC DNA Ladder Mix - NL1417 : 50 µg, NL1418 : 50 x 50 µg, NL1419 : 50 µg (ready-to-use), NL1420 : 50 x 50 µg (ready-to-use)

Chromatein Prestained Protein Ladder

Contains 11 proteins that resolve into sharp, tight bands in the range of 10-175 kDa



Features:

- **Broad Range :** 10-175kDa
- **Convenient :** Supplied in a loading buffer for direct loading
- **Easy Identification :** ~10, ~40 & ~90kDa (reference bands coupled with a blue dye)

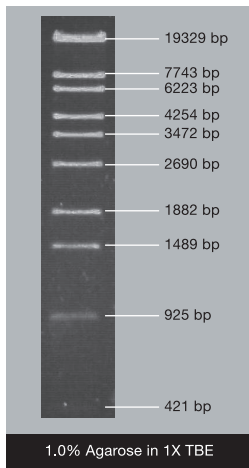
Packaging size:

- PR0602 : 2 X 250 µl (ready-to-use)

Store at -20°C

VC DNA Markers

VC Lambda/ BssT1I Marker

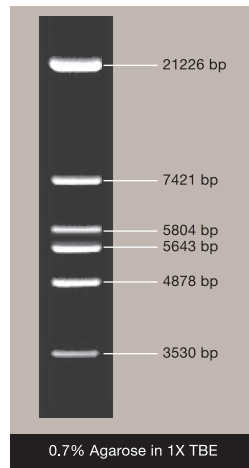


Packaging size:

- NM2433 : 50 µg
- NM2434 : 5 X 50 µg
- NM2435 : 50 µg (ready-to-use)
- NM2436 : 5 X 50 µg (ready-to-use)

Store at -20°C

VC Lambda/ EcoRI Marker

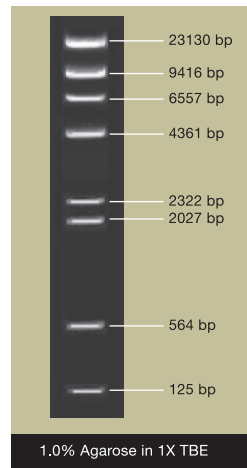


Packaging size:

- NM2401 : 50 µg
- NM2402 : 5 X 50 µg
- NM2403 : 50 µg (ready-to-use)
- NM2404 : 5 X 50 µg (ready-to-use)

Store at -20°C

VC Lambda/ HindIII Marker

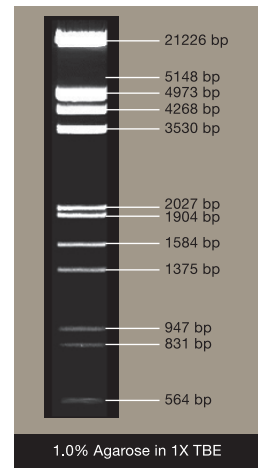


Packaging size:

- NM2405 : 50 µg
- NM2406 : 5 X 50 µg
- NM2407 : 50 µg (ready-to-use)
- NM2408 : 5 X 50 µg (ready-to-use)

Store at -20°C

VC Lambda/ EcoRI+HindIII Marker



Packaging size:

- NM2409 : 50 µg
- NM2410 : 5 X 50 µg
- NM2411 : 50 µg (ready-to-use)
- NM2412 : 5 X 50 µg (ready-to-use)

Store at -20°C

Also available:

CentiMark PCR Marker - NM2417 : 50 µg, NM2418 : 50 x 50 µg, NM2419 : 50 µg (ready-to-use), NM2420 : 50 x 50 µg (ready-to-use)
MilliMark PCR Marker - NM2421 : 50 µg, NM2422 : 50 x 50 µg, NM2423 : 50 µg (ready-to-use), NM2424 : 50 x 50 µg (ready-to-use)
VC Lambda / Pst I Marker - NM2425 : 50 µg, NM2426 : 50 x 50 µg, NM2427 : 50 µg (ready-to-use), NM2428 : 50 x 50 µg (ready-to-use)
VC pUC19 / Msp I Marker - NM2413 : 50 µg, NM2414 : 50 x 50 µg, NM2415 : 50 µg (ready-to-use), NM2416 : 50 x 50 µg (ready-to-use)
VC pBR 322 / Hae III Marker - NM2429 : 50 µg, NM2430 : 50 x 50 µg, NM2431 : 50 µg (ready-to-use), NM2432 : 50 x 50 µg (ready-to-use)